

# the workbook

COLLECTION 2021



  
TEE JAYS®



# the overview

COLLECTION 2021

Where our main catalogue sets the atmosphere and gives you both style - and branding inspiration, this workbook is meant as a quick reference guide, that provides you with a great overview of the TEE JAYS collection.

We think that it's an invaluable sales tool and it's our hope that this book will simplify your activities so you can hone your craft.

# company policies

## CONDUCT AND ENVIRONMENT

Social Responsibility is in our DNA and therefore it is included as an integral component in every process, every project, every product that carries our name.



Our Code of Conduct is based on UN Global Compact's 10 principles which are based on internationally adopted declarations and conventions on human rights, labour rights, environmental protection and anti-corruption.

TEE JAYS does not own any factories, but we cooperate with suppliers that understand the importance of complying with the guidelines of our Code of Conduct about the ethics and behaviour throughout the supply chain.



All TEE JAYS products are covered by STANDARD 100 by OEKO-TEX® which is one of the best-known labels for textiles and guarantee that the clothing does not contain harmful substances. It is the world's leading independent testing institutes and regularly controls all testing for substances which are harmful to human health and the environment. Clothing that carries the STANDARD 100 by OEKO-TEX® label is subject to requirements covering pH value and the content of, for example, pesticides and heavy metals.



The Organic Content Standard (OCS) verifies the presence and amount of organic material in a product and tracks the flow of the raw material from its source to the final product that contains 95-100 percent certified organic cotton. This Global independent certification ensures organic value of our products.

OCS Blended is in similar way the certification that verifies and value the organic content in products mixed with synthetic or conventional materials.



TEE JAYS is member of Amfori, the leading global organisation for open and sustainable trade. Amfori unites more than 2000 companies committed to improving working conditions and environmental condition in the global textile production. By that also supports us in monitoring a constant high level in the nominated factories producing TEE JAYS products.



THE LUXURY FASHION TEES



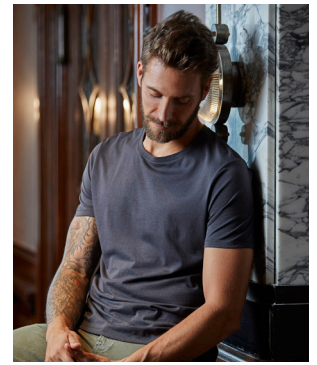
Style 5000 | Luxury Tee

- Tailored fit
- Shoulder to shoulder neck tape
- Double preshrunk
- Long fiber cotton
- Double stitched
- Enzyme wash

Size: S-3XL | Weight: 160 gsm  
 Quality: 100% ringspun  
 combed organic cotton  
 Colli: 50/10 pcs



Colours:



Style 5001 | Womens Luxury Tee

- Tailored fit
- Shoulder to shoulder neck tape
- Double preshrunk
- Long fiber cotton
- Double stitched
- Enzyme wash

Size: S-XXL | Weight: 160 gsm  
 Quality: 100% ringspun  
 combed organic cotton  
 Colli: 50/10 pcs



Colours:



news  
20/21



Style 5004 | Luxury V-Neck Tee

- Tailored fit
- Shoulder to shoulder neck tape
- Double preshrunk
- Long fiber cotton
- Double stitched
- Enzyme wash

Size: S-3XL | Weight: 160 gsm  
 Quality: 100% ringspun  
 combed organic cotton  
 Heather: 85% organic cotton - 15% viscose  
 Colli: 50/10 pcs



Colours:



news  
20/21



Style 5005 | Womens Luxury V-Neck Tee

- Tailored fit
- Shoulder to shoulder neck tape
- Double preshrunk
- Long fiber cotton
- Double stitched
- Enzyme wash

Size: S-XXL | Weight: 160 gsm  
 Quality: 100% ringspun  
 combed organic cotton  
 Heather: 85% organic cotton - 15% viscose  
 Colli: 50/10 pcs



Colours:



Style 5062 | Roll-Up Tee

- Fashion loose fit
- Shoulder to shoulder neck tape
- Double preshrunk
- Large neck opening with slim neck rib
- Enzyme wash

Size: S-3XL | Weight: 160 gsm  
 Quality: 100% ringspun  
 combed cotton  
 Heather: 85% cotton - 15% viscose  
 Colli: 50/10 pcs



Colours:



THE LUXURY FASHION TEES



Style 5063 | Womens Roll-Up Tee

- Fashion loose fit
- Shoulder to shoulder neck tape
- Double preshrunk
- Large neck opening with slim neck rib
- Enzyme wash

Size: S-XXL | Weight: 160 gsm  
 Quality: 100% ringspun  
 combed cotton  
 Heather: 85% cotton - 15% viscose  
 Colli: 50/10 pcs

Colours:



Style 5060 | Raw Edge Tee

- Fashion loose fit
- Shoulder to shoulder neck tape
- Double preshrunk
- Large neck opening
- Self-fabric raw edge collar
- Enzyme wash

Size: S-3XL | Weight: 160 gsm  
 Quality: 100% ringspun  
 combed cotton  
 Colli: 50/10 pcs

Colours:



OCS In transition to organic



Style 5061 | Womens Raw Edge Tee

- Fashion loose fit
- Shoulder to shoulder neck tape
- Double preshrunk
- Large neck opening
- Self-fabric raw edge collar
- Enzyme wash

Size: S-XXL | Weight: 160 gsm  
 Quality: 100% ringspun  
 combed cotton  
 Colli: 50/10 pcs

Colours:



# MEMORY LANE VINTAGE TEES

## Style 5072 | Baseball Tee



- Tailored fit
- Long fiber cotton
- Double preshrunk
- Self-fabric collar
- Raglan sleeves

Size: S-3XL | Weight: 185 gsm  
 Quality: 100% ringspun  
 combed cotton  
 Heather: 85% cotton - 15% viscose  
 Colli: 50/10 pcs

Colours:



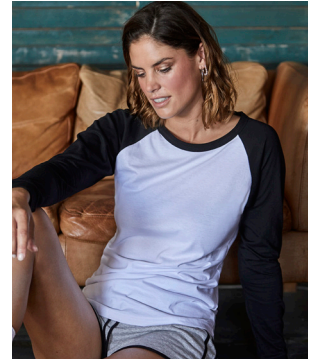
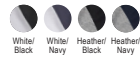
## Style 5073 | Womens Baseball Tee



- Tailored fit
- Long fiber cotton
- Double preshrunk
- Self-fabric collar
- Raglan sleeves

Size: S-XXL | Weight: 185 gsm  
 Quality: 100% ringspun  
 combed cotton  
 Heather: 85% cotton - 15% viscose  
 Colli: 50/10 pcs

Colours:



## Style 5070 | Ringer Tee



- Tailored fit
- Long fiber cotton
- Double preshrunk
- Slim neckline with elastane

Size: S-3XL | Weight: 160 gsm  
 Quality: 100% ringspun  
 combed cotton  
 Melange: 50% cotton - 50% polyester  
 Colli: 50/10 pcs

Colours:



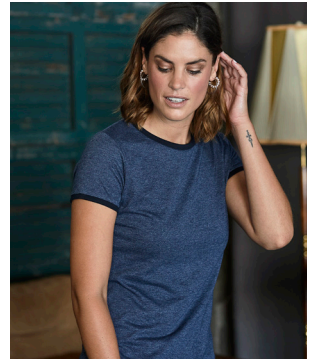
## Style 5071 | Womens Ringer Tee



- Tailored fit
- Long fiber cotton
- Double preshrunk
- Slim neckline with elastane

Size: S-XXL | Weight: 160 gsm  
 Quality: 100% ringspun  
 combed cotton  
 Melange: 50% cotton - 50% polyester  
 Colli: 50/10 pcs

Colours:



## Style 5050 | Urban Melange Tee



- Fashion fit
- Shoulder to shoulder neck tape
- Double preshrunk
- Double stitched
- Enzyme wash

Size: S-3XL | Weight: 160 gsm  
 Quality: 50% cotton - 50% polyester  
 Colli: 50/10 pcs

Colours:





# MEMORY LANE VINTAGE TEES



## Style 5051 | Womens Urban Melange Tee

- Fashion fit
- Shoulder to shoulder neck tape
- Double preshrunk
- Double stitched
- Enzyme wash

Size: S-XXL | Weight: 160 gsm  
Quality: 50% cotton - 50% polyester  
Colli: 50/10 pcs

### Colours:



## THE STRETCH TEES



### Style 401 | Stretch V-Neck Tee

- 2 layer collar with elastane
- Neck tape
- Double preshrunk
- Double stitched
- Full feeder elastane
- Enzyme- and silicone wash

Size: S-3XL | Weight: 195 gsm  
Quality: 90% ringspun  
combed cotton - 10% elastane  
Colli: 50/10 pcs

#### Colours:



### Style 450 | Womens Stretch Tee

- 2 layer collar with elastane
- Neck tape
- Double preshrunk
- Double stitched
- Full feeder elastane
- Enzyme- and silicone wash

Size: S-3XL | Weight: 195 gsm  
Quality: 90% ringspun  
combed cotton - 10% elastane  
Colli: 50/10 pcs

#### Colours:

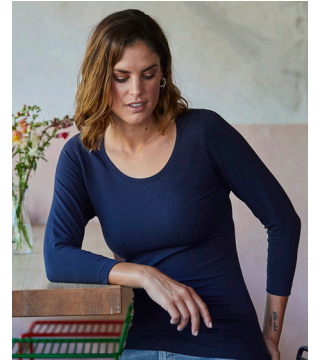


### Style 460 | Womens Stretch 3/4 Sleeve Tee

- 2 layer collar with elastane
- Neck tape
- Double preshrunk
- Double stitched
- Full feeder elastane
- Enzyme- and silicone wash

Size: S-3XL | Weight: 195 gsm  
Quality: 90% ringspun  
combed cotton - 10% elastane  
Colli: 50/10 pcs

#### Colours:



### Style 455 | Womens Fashion Stretch Tee (Extra length)

- 2 layer collar with elastane
- Double preshrunk
- Double stitched
- Full feeder elastane
- Enzyme- and silicone wash

Size: XS-XXL | Weight: 175 gsm  
Quality: 92% ringspun  
combed cotton - 8% elastane  
Colli: 50/10 pcs

#### Colours:



STATE OF THE ART INTERLOCK

Style 530 | Long Sleeve Interlock Tee



- Double stitched
- Double preshrunk
- Long fiber cotton
- Shaped fit
- Enzyme- and silicone wash

Size: S-3XL | Weight: 220 gsm  
 Quality: 100% ringspun  
 combed organic cotton  
 Colli: 50/10 pcs



Colours:



Style 590 | Womens Long Sleeve Interlock Tee



- Double stitched
- Double preshrunk
- Long fiber cotton
- Shaped fit
- Enzyme- and silicone wash
- Elastane neck rib

Size: S-3XL | Weight: 220 gsm  
 Quality: 100% ringspun  
 combed organic cotton  
 Colli: 50/10 pcs



Colours:



Style 520 | Interlock Tee



- Double stitched
- Double preshrunk
- Long fiber cotton
- Shaped fit
- Enzyme- and silicone wash

Size: S-3XL \*4-5XL | Weight: 220 gsm  
 Quality: 100% ringspun  
 combed cotton  
 Colli: 50/10 pcs



Colours:



OCS

In transition to organic



Style 580 | Womens Interlock Tee



- Double stitched
- Double preshrunk
- Long fiber cotton
- Shaped fit
- Enzyme- and silicone wash
- Elastane neck rib

Size: S-3XL | Weight: 220 gsm  
 Quality: 100% ringspun  
 combed cotton  
 Colli: 50/10 pcs



Colours:



OCS

In transition to organic



# THE BASIC TEES

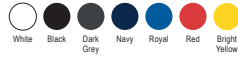


## Style 1000 | Basic Tee

- 2 layer collar with elastane
- Shoulder to shoulder neck tape
- Double stitched
- Preshrunk

Size: S-5XL | Weight: 150 gsm  
 Quality: 100% ringspun  
 combed cotton  
 Colli: 50/10 pcs

Colours:

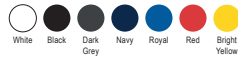


## Style 1050 | Womens Basic Tee

- 2 layer collar with elastane
- Shoulder to shoulder neck tape
- Double stitched
- Preshrunk

Size: S-XXL | Weight: 150 gsm  
 Quality: 100% ringspun  
 combed cotton  
 Colli: 50/10 pcs

Colours:



## Style 8000 | Sof Tee

- 2 layer collar with elastane
- Shoulder to shoulder neck tape
- Double stitched
- Double preshrunk cotton

Size: S-3XL \*4-5XL | Weight: 185 gsm  
 Quality: 100% ringspun  
 combed cotton  
 Colli: 50/10 pcs

Colours:



OCS

In transition to organic



## Style 8050 | Womens Sof Tee

- 2 layer collar with elastane
- Shoulder to shoulder neck tape
- Double stitched
- Double preshrunk cotton

Size: S-3XL | Weight: 185 gsm  
 Quality: 100% ringspun  
 combed cotton  
 Colli: 50/10 pcs

Colours:



OCS

In transition to organic



## Style 8005 | Fashion Sof Tee

- 2 layer collar with elastane
- Shoulder to shoulder neck tape
- Double stitched
- Double preshrunk cotton

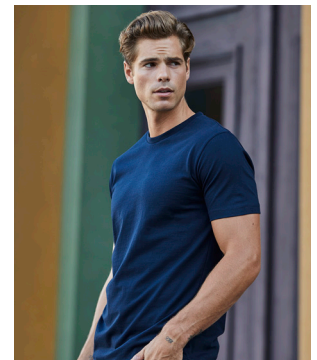
Size: S-3XL | Weight: 185 gsm  
 Quality: 100% ringspun  
 combed cotton  
 Colli: 50/10 pcs

Colours:



OCS

In transition to organic



THE BASIC TEES



Style 8006 | Fashion V-Neck Sof Tee

- 2 layer collar with elastane
- Shoulder to shoulder neck tape
- Double stitched
- Double preshrunk cotton

Size: S-3XL | Weight: 185 gsm  
 Quality: 100% ringspun  
 combed cotton  
 Colli: 50/10 pcs



Colours:



OCS In transition to organic



Style 8007 | Long Sleeve Fashion Sof Tee

- 2 layer collar with elastane
- Shoulder to shoulder neck tape
- Double stitched
- Double preshrunk cotton

Size: S-5XL | Weight: 185 gsm  
 Quality: 100% ringspun  
 combed cotton  
 Colli: 50/10 pcs



Colours:



## POWER SERIES

news  
20/21



### Style 1100 | Power Tee

- 2 layer collar with elastane
- Shoulder to shoulder neck tape
- Tear away necklabel

Size: XS-5XL | Weight: 140 gsm  
Quality: 100% supercarded  
organic cotton  
Colli: 50/10 pcs



Colours:



news  
20/21



### Style 1100B | Junior Power Tee

- 2 layer collar with elastane
- Shoulder to shoulder neck tape
- Tear away necklabel

Size: 4-14 years | Weight: 140 gsm  
Quality: 100% supercarded  
organic cotton  
Colli: 50/10 pcs



Colours:



news  
20/21



### Style 1200 | Power Polo

- Flat knit collar
- Double preshrunk
- Straight sleeve without cuff
- Clean finished placket
- Tear away necklabel

Size: XS-5XL | Weight: 190 gsm  
Quality: 65% organic cotton  
- 35% polyester  
Colli: 25/1 pcs



Colours:



news  
20/21



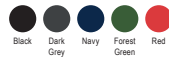
### Style 5100 | Power Sweatshirt

- Double dyed
- Elastane in all ribs for better stability
- Brushed inside
- Tear away necklabel

Size: XS-5XL | Weight: 280 gsm  
Quality: 70% organic cotton  
- 30% polyester  
Colli: 20/1 pcs (3-5XL 10/1)



Colours:



news  
20/21



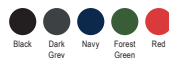
### Style 5102 | Power Hoodie

- Double dyed
- Elastane in all ribs for better stability
- Brushed inside
- Tear away necklabel

Size: XS-5XL | Weight: 280 gsm  
Quality: 70% organic cotton  
- 30% polyester  
Colli: 10/1 pcs



Colours:





# LUXURY STRETCH POLOS



## Style 1405 | Luxury Stretch Polo

- Flat knit collar with elastane
- Double preshrunk
- Neck tape
- Clean finished placket

Size: S-3XL \*4-5XL | Weight: 215 gsm  
 Quality: 95% ringspun  
 combed cotton – 5% elastane  
 Mini pique  
 Colli: 25/1 pcs



Colours:



OCS

In transition to organic



## Style 145 | Womens Luxury Stretch Polo

- Flat knit collar with elastane
- Double preshrunk
- Neck tape
- Clean finished placket

Size: S-3XL | Weight: 215 gsm  
 Quality: 95% ringspun  
 combed cotton – 5% elastane  
 Mini pique  
 Colli: 25/1 pcs



Colours:



OCS

In transition to organic



news  
20/21



## Style 1409 | Womens Luxury Stretch V-Neck Polo

- Flat knit collar with elastane
- Double preshrunk
- Neck tape

Size: S-3XL | Weight: 215 gsm  
 Quality: 95% ringspun combed  
 organic cotton - 5% elastane  
 Mini pique  
 Colli: 25/1 pcs



Colours:



OCS

In transition to organic



## Style 1407 | Luxury Stripe Stretch Polo

- Flat knit collar with elastane
- Double preshrunk
- Neck tape
- Clean finished placket

Size: S-3XL | Weight: 215 gsm  
 Quality: 95% ringspun combed  
 organic cotton - 5% elastane  
 Mini pique  
 Colli: 25/1 pcs



Colours:



OCS

In transition to organic



## Style 1408 | Womens Luxury Stripe Stretch Polo

- Flat knit collar with elastane
- Double preshrunk
- Neck tape
- Clean finished placket

Size: S-3XL | Weight: 215 gsm  
 Quality: 95% ringspun  
 combed cotton – 5% elastane  
 Mini pique  
 Colli: 25/1 pcs



Colours:



OCS

In transition to organic





# LUXURY STRETCH POLOS



## Style 1410 | Fashion Luxury Stretch Polo

- Button down self-fabric collar
- Shaped fit
- Fashion placket
- Double preshrunk
- Longer back with side slits

Size: S-3XL | Weight: 215 gsm  
 Quality: 95% ringspun  
 combed cotton – 5% elastane  
 Mini pique  
 Colli: 25/1 pcs



Colours:



OCS In transition to organic



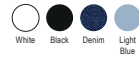
## Style 1412 | Fashion Long Sleeve Luxury Stretch Polo

- Button down self-fabric collar
- Shaped fit
- Fashion placket
- Double preshrunk
- Longer back with side slits

Size: S-3XL | Weight: 215 gsm  
 Quality: 95% ringspun  
 combed cotton – 5% elastane  
 Mini pique  
 Colli: 25/1 pcs



Colours:



## Style 1406 | Luxury Stretch Long Sleeve Polo

- Flat knit collar with elastane
- Tailored fit
- Double preshrunk
- Shoulder to shoulder neck tape
- Clean finished placket

Size: S-3XL | Weight: 215 gsm  
 Quality: 95% ringspun combed  
 organic cotton – 5% elastane  
 Mini pique  
 Colli: 25/1 pcs



Colours:



## Style 146 | Womens Luxury Stretch Long Sleeve Polo

- Flat knit collar with elastane
- Tailored fit
- Double preshrunk
- Shoulder to shoulder neck tape
- Clean finished placket

Size: S-3XL | Weight: 215 gsm  
 Quality: 95% ringspun combed  
 organic cotton – 5% elastane  
 Mini pique  
 Colli: 25/1 pcs



Colours:



## PIMA POLO



### Style 1440 | Pima Polo

- Self-fabric collar
- Tailored fit
- Reinforced shoulders
- Double preshrunk
- Enzyme wash

Size: S-3XL | Weight: 220 gsm  
 Quality: 100% ringspun  
 combed pima cotton  
 Colli: 25/1 pcs

#### Colours:

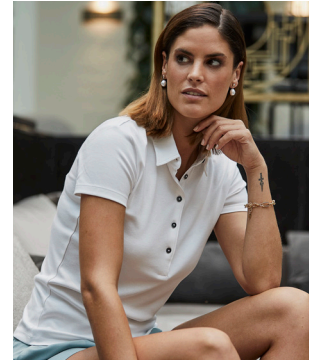


### Style 1441 | Womens Pima Polo

- Self-fabric collar
- Tailored fit
- Reinforced shoulders
- Double preshrunk
- Enzyme wash

Size: S-XXL | Weight: 220 gsm  
 Quality: 100% ringspun  
 combed pima cotton  
 Colli: 25/1 pcs

#### Colours:



## CLASSIC POLOS



### Style 1400 | Heavy Polo

- Double stitched
- Double preshrunk
- Clean finished placket
- Taped shoulders

Size: S-5XL | Weight: 215 gsm  
 Quality: 100% ringspun  
 combed organic cotton pique  
 Colli: 25/1 pcs

#### Colours:

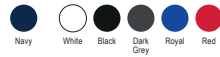


### Style 1401 | Womens Heavy Polo

- Double stitched
- Double preshrunk
- Clean finished placket
- Taped shoulders

Size: S-3XL | Weight: 215 gsm  
 Quality: 100% ringspun  
 combed cotton pique  
 Colli: 25/1 pcs

#### Colours:



OCS In transition to organic



## COTTON/POLYESTER POLO



### Style 2400 | Pocket Polo

- Double stitched
- Double preshrunk
- Neck tape
- Clean finished placket with pearl buttons

Size: S-5XL | Weight: 185 gsm  
 Quality: 60% cotton  
 - 40% polyester pique  
 Colli: 25/1 pcs

#### Colours:



PERFORMANCE WEAR



Style 7020 | CoolDry Tee

- Fast drying material
- Sweat transporting
- Sporty fit
- Reflective print
- Flat lock stitching

Size: S-3XL | Weight: 160 gsm  
 Quality: 95% CoolDry  
 micro polyester - 5% spandex  
 Colli: 50/1 pcs



Colours:



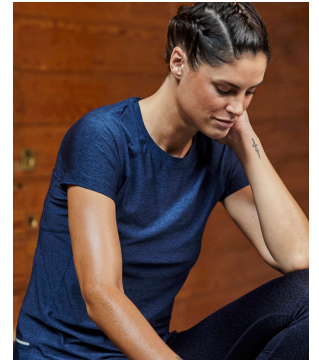
Style 7021 | Womens CoolDry Tee

- Fast drying material
- Sweat transporting
- Sporty fit
- Reflective print
- Flat lock stitching

Size: S-XXL | Weight: 160 gsm  
 Quality: 95% CoolDry  
 micro polyester - 5% spandex  
 Colli: 50/1 pcs



Colours:



news  
20/21



Style 7010 | Luxury Sport Tee

- Fast drying material
- Sweat transporting
- Double stitched
- Seal print at shoulders

Size: S-3XL | Weight: 150 gsm  
 Quality: 100% polyester  
 Colli: 50/1 pcs

Colours:



news  
20/21

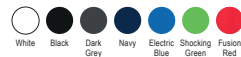


Style 7011 | Womens Luxury Sport Tee

- Fast drying material
- Sweat transporting
- Double stitched
- Seal print at shoulders

Size: S-3XL | Weight: 150 gsm  
 Quality: 100% polyester  
 Colli: 50/1 pcs

Colours:



Style 7200 | Luxury Sport Polo

- Shaped fit
- Self-fabric fused collar
- Clean finished placket
- Anthracite contrast buttons
- Moist wicking finish

Size: S-3XL | Weight: 150 gsm  
 Quality: 100% polyester  
 Colli: 25/1 pcs

Colours:



PERFORMANCE WEAR

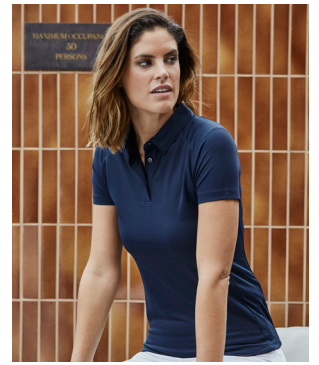


Style 7201 | Womens Luxury Sport Polo

- Shaped fit
- Self-fabric fused collar
- Clean finished placket
- Anthracite contrast buttons
- Moist wicking finish

Size: S-3XL | Weight: 150 gsm  
 Quality: 100% polyester  
 Colli: 25/1 pcs

Colours:



Style 7100 | Performance Polo

- Clean finished placket
- Bird eye knit fabric
- Flat knit collar
- Tailored fit

Size: S-3XL | Weight: 150 gsm  
 Quality: 100% functional micro polyester  
 Colli: 25/1 pcs

Colours:



Style 7105 | Womens Performance Polo

- Clean finished placket
- Bird eye knit fabric
- Flat knit collar
- Tailored fit

Size: S-3XL | Weight: 150 gsm  
 Quality: 100% functional micro polyester  
 Colli: 25/1 pcs

Colours:



Style 5600 | Performance Hoodie

- Fashion fit
- Adjustable hood
- Large front pocket
- Self-fabric cuff and hem
- Unbrushed inside

Size: S-3XL | Weight: 290 gsm  
 Quality: 100% polyester  
 Colli: 10/1 pcs

Colours:



Style 5601 | Womens Performance Hoodie

- Fashion fit
- Adjustable hood
- Large front pocket
- Self-fabric cuff and hem
- Unbrushed inside

Size: S-XXL | Weight: 290 gsm  
 Quality: 100% polyester  
 Colli: 10/1 pcs

Colours:



## PERFORMANCE WEAR



### Style 5606 | Performance Jogging Pants

- Fashion fit
- Elastic waist band
- SBS zippers
- Self-fabric cuff
- Unbrushed inside

Size: XS-3XL | Weight: 290 gsm  
Quality: 100% polyester  
Colli: 10/1 pcs

#### Colours:



Black



### Style 5602 | Performance Zip Sweat

- Shaped fit
- SBS zippers
- Self-fabric cuff
- Unbrushed inside

Size: S-3XL | Weight: 290 gsm  
Quality: 100% polyester  
Colli: 10/1 pcs

#### Colours:



Black

Deep Navy

Dark Grey Mel.



### Style 5603 | Womens Performance Zip Sweat

- Shaped fit
- SBS zippers
- Self-fabric cuff
- Unbrushed inside

Size: S-XXL | Weight: 290 gsm  
Quality: 100% polyester  
Colli: 10/1 pcs

#### Colours:



Black

Deep Navy

Dark Grey Mel.





## URBAN SWEATS



### Style 5402 | Urban Zip Hoodie

- Loose fashion fit
- Raglan sleeves
- 2x2 rib with elastane
- Unbrushed inside
- Enzyme wash

Size: S-3XL | Weight: 320 gsm  
 Quality: 100% ringspun  
 combed cotton  
 Heather: 80% cotton – 20% polyester  
 Colli: 10/1 pcs

Colours:



Black Navy Heather Wine



### Style 5500 | Lightweight Vintage Sweatshirt

- Shaped fit
- Raglan sleeves
- Cuff and waist band with elastane
- Self-fabric collar
- Brushed inside

Size: XS-3XL | Weight: 260 gsm  
 Quality: 60% cotton  
 – 40% polyester  
 Colli: 20/1 pcs (3XL 10/1 pcs)

Colours:



Black Mel Denim Mel



### Style 5502 | Lightweight Hooded Vintage Sweatshirt

- Shaped fit
- Raglan sleeves
- Cuff and waist band with elastane
- Self-fabric collar
- Brushed inside

Size: XS-3XL | Weight: 260 gsm  
 Quality: 60% cotton  
 – 40% polyester  
 Colli: 10/1 pcs

Colours:



Black Mel Denim Mel



### Style 5400 | Urban Sweat

- Loose fashion fit
- Raglan sleeves
- 2x2 rib with elastane
- Unbrushed inside
- Enzyme wash

Size: S-3XL | Weight: 320 gsm  
 Quality: 100% ringspun  
 combed cotton  
 Heather: 80% cotton – 20% polyester  
 Colli: 10/1 pcs

Colours:



Black Navy Heather



## COLLEGE SWEATS

news  
20/21



### Style 5438 | Half Zip Sweatshirt

- Elastane in all ribs
- 3 thread fabric
- Brushed inside
- Double dyed

Size: S-3XL | Weight: 310-320 gsm  
 Quality: 70% ringspun cotton  
 – 30% polyester  
 Colli: 10/1 pcs

Colours:



Black Dark Grey Navy



COLLEGE SWEATS

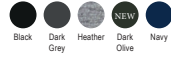


Style 5429 | Unisex Heavy Sweatshirt

- Double stitched
- Elastane in all ribs
- 3 thread fabric
- Brushed inside
- Double dyed

Size: S-5XL | Weight: 310-320 gsm  
 Quality: 70% ringspun cotton  
 - 30% polyester  
 Colli: 20/1 pcs (3-5XL 10/1 pcs)

Colours:



Style 5430 | Hooded Sweatshirt

- Double stitched
- Elastane in all ribs
- 3 thread fabric
- Brushed inside
- Double dyed

Size: S-3XL | Weight: 310-320 gsm  
 Quality: 70% ringspun cotton  
 - 30% polyester  
 Colli: 10/1 pcs

Colours:



Style 5431 | Womens Hooded Sweatshirt

- Double stitched
- Elastane in all ribs
- 3 thread fabric
- Brushed inside
- Double dyed

Size: S-XXL | Weight: 310-320 gsm  
 Quality: 70% ringspun cotton  
 - 30% polyester  
 Colli: 10/1 pcs

Colours:



Style 5425 | Sweat Pants

- Double stitched
- Elastane in all ribs
- 3 thread fabric
- Brushed inside
- Double dyed

Size: XS-XXL | Weight: 310-320 gsm  
 Quality: 70% ringspun cotton  
 - 30% polyester  
 Colli: 10/1 pcs

Colours:



Style 5435 | Fashion Full Zip Hood

- Double stitched
- Elastane in all ribs
- 3 thread fabric
- Brushed inside
- Double dyed

Size: S-3XL | Weight: 310-320 gsm  
 Quality: 70% ringspun cotton  
 - 30% polyester  
 Colli: 10/1 pcs

Colours:





## COLLEGE SWEATS



### Style 5436 | Womens Fashion Full Zip Hood

- Double stitched
- Elastane in all ribs
- 3 thread fabric
- Brushed inside
- Double dyed

Size: S-XXL | Weight: 310-320 gsm  
Quality: 70% ringspun cotton  
- 30% polyester  
Colli: 10/1 pcs

#### Colours:



### Style 5432 | Two-Tone Hooded Sweatshirt

- Double stitched
- Elastane in all ribs
- Large front pocket
- Brushed inside

Size: S-3XL | Weight: 310-320 gsm  
Quality: 70% ringspun cotton  
- 30% polyester  
Colli: 10/1 pcs

#### Colours:



## DRESS SHIRTS



### Style 4020 | Luxury Shirt Comfort Fit

- Moderate cutaway collar
- Fused collar and cuff
- Back yoke
- Darts on back
- Curved hem

Size: S-4XL | Weight: 133 gsm  
 Quality: 100% cotton yarn  
 dyed 100/2 twill  
 Colli: 10/1 pcs



### Style 4021 | Luxury Shirt Slim Fit

- Moderate cutaway collar
- Fused collar and cuff
- Back yoke
- Darts on back
- Curved hem

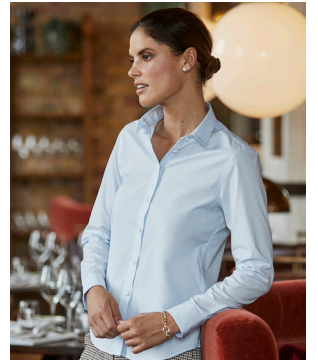
Size: S-XXL | Weight: 133 gsm  
 Quality: 100% cotton yarn  
 dyed 100/2 twill  
 Colli: 10/1 pcs



### Style 4025 | Womens Stretch Luxury Shirt

- Shaped fit
- Fused collar and cuff
- Back yoke with two side pleats
- Darts on back
- Curved hem

Size: XS-3XL | Weight: 133 gsm  
 Quality: 96% cotton  
 - 4% Lycra® - PD Poplin  
 Colli: 10/1 pcs



## CASUAL SHIRTS



### Style 4010 | Urban Oxford Shirt

- Loose fit
- Button under collar
- Fused collar and cuff
- Back yoke

Size: S-3XL | Weight: 166 gsm  
 Quality: 100% cotton  
 garment washed  
 Colli: 10/1 pcs



### Style 4000 | Perfect Oxford Shirt

- Shaped fit
- Fused collar and cuff
- Back yoke with box pleat
- Inside hanger loop
- Curved hem

Size: S-4XL | Weight: 166 gsm  
 Quality: 100% cotton  
 garment washed  
 Colli: 10/1 pcs



## CASUAL SHIRTS

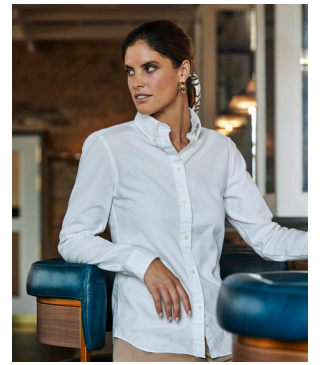
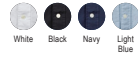


### Style 4001 | Womens Perfect Oxford Shirt

- Shaped fit
- Fused collar and cuff
- Back yoke with box pleat
- Inside hanger loop
- Curved hem

Size: XS-3XL | Weight: 166 gsm  
Quality: 100% cotton  
garment washed  
Colli: 10/1 pcs

#### Colours:



### Style 4002 | Casual Twill Shirt

- Shaped fit
- Fused collar and cuff
- Back yoke with box pleat
- Inside hanger loop
- Curved hem

Size: S-4XL | Weight: 166 gsm  
Quality: 100% cotton  
twill garment washed  
Colli: 10/1 pcs

#### Colours:

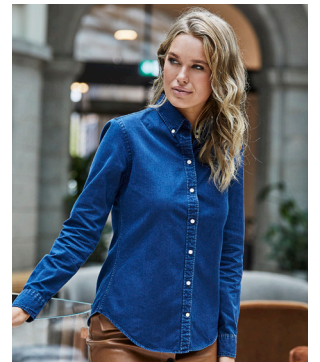


### Style 4003 | Womens Casual Twill Shirt

- Shaped fit
- Fused collar and cuff
- Back yoke with box pleat
- Inside hanger loop
- Curved hem

Size: XS-3XL | Weight: 166 gsm  
Quality: 100% cotton  
twill garment washed  
Colli: 10/1 pcs

#### Colours:





Style 6005 | Womens Cardigan



- 30 degree washing at wool program
- Fully fashion
- Tailored fit
- Quality Italian merino/acrylic yarn

Size: S-XXL  
Quality: 14 gauge - 50% merino wool  
- 50% acrylic  
Colli: 20/1 pcs

Colours:



Style 6000 | Mens Crew Neck



- 30 degree washing at wool program
- Fully fashion
- Tailored fit
- Quality Italian merino/acrylic yarn

Size: S-3XL  
Quality: 14 gauge - 50% merino wool  
- 50% acrylic  
Colli: 20/1 pcs

Colours:



Style 6001 | Mens V-Neck



- 30 degree washing at wool program
- Fully fashion
- Tailored fit
- Quality Italian merino/acrylic yarn

Size: S-3XL  
Quality: 14 gauge - 50% merino wool  
- 50% acrylic  
Colli: 20/1 pcs

Colours:



PERFORMANCE SOFTSHELL

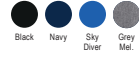
Style 9510 | Lightweight Performance Softshell



- Shaped fit
- Bonded waterproof sleeve pocket
- 2 large front pockets
- Adjustable hem

Size: S-3XL | Weight: 260 gsm  
 Quality: 95% polyester  
 – 5% spandex  
 Colli: 10/1 pcs

Colours:



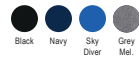
Style 9511 | Womens Lightweight Performance Softshell



- Shaped fit
- Bonded waterproof sleeve pocket
- 2 large front pockets
- Adjustable hem

Size: S-3XL | Weight: 260 gsm  
 Quality: 95% polyester  
 – 5% spandex  
 Colli: 10/1 pcs

Colours:



Style 9514 | Hooded Lightweight Performance Softshell



- Shaped fit
- Designed chest pocket
- 2 large front pockets
- Adjustable hood and hem

Size: S-3XL | Weight: 260 gsm  
 Quality: 95% polyester  
 – 5% spandex  
 Colli: 10/1 pcs

Colours:



Style 9515 | Womens Hooded Lightweight Performance Softshell



- Shaped fit
- Designed chest pocket
- 2 large front pockets
- Adjustable hood and hem

Size: S-3XL | Weight: 260 gsm  
 Quality: 95% polyester  
 – 5% spandex  
 Colli: 10/1 pcs

Colours:



## OUTDOOR FLEECE



### Style 9615 | Outdoor Fleece

- Tailored fashion fit
- 2 large front pockets
- Brushed inside
- Quality zippers

Size: S-3XL | Weight: 280 gsm  
Quality: 100% polyester  
Colli: 10/1 pcs

#### Colours:



### Style 9616 | Womens Outdoor Fleece

- Tailored fashion fit
- 2 large front pockets
- Brushed inside
- Quality zippers

Size: S-3XL | Weight: 280 gsm  
Quality: 100% polyester  
Colli: 10/1 pcs

#### Colours:



### Style 9160 | Active Fleece

- Anti peeling micro fleece
- Laser cut storm flap
- 2 side pockets
- Shaped fit

Size: S-3XL | Weight: 170 gsm  
Quality: 100% polyester  
Colli: 10/1 pcs

#### Colours:



### Style 9170 | Womens Active Fleece

- Anti peeling micro fleece
- Laser cut storm flap
- 2 side pockets
- Shaped fit

Size: S-3XL | Weight: 170 gsm  
Quality: 100% polyester  
Colli: 10/1 pcs

#### Colours:



## THE CROSSOVERS

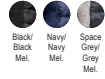


### Style 9610 | Hooded Outdoor Crossover

- Shaped fit
- Inner pocket and two large front pockets
- Elastic cuffs
- Reversed quality zippers
- Prepared for embroidery

Size: S-3XL  
 Quality: 100% ripstop polyester 400T  
 with 100% knitted polyester  
 Colli: 10/1 pcs

Colours:

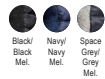


### Style 9611 | Womens Hooded Outdoor Crossover

- Shaped fit
- Inner pocket and two large front pockets
- Elastic cuffs
- Reversed quality zippers
- Prepared for embroidery

Size: S-3XL  
 Quality: 100% ripstop polyester 400T  
 with 100% knitted polyester  
 Colli: 10/1 pcs

Colours:



### Style 9626 | Crossover Jacket

- Inner pocket and two large front pockets
- Elastic cuffs
- Quality zippers
- Prepared for embroidery

Size: S-4XL  
 Quality: 100% polyester 300T  
 with 95/5% softshell.  
 Polyester padding  
 Colli: 10/1 pcs

Colours:



### Style 9624 | Crossover Bodywarmer

- Shaped fit
- Inner pocket and two large front pockets
- Armholes elastic trim
- Reversed quality zippers
- Prepared for embroidery

Size: S-3XL  
 Quality: 100% polyester 300T  
 with 95/5% softshell.  
 Polyester padding  
 Colli: 10/1 pcs

Colours:



### Style 9625 | Womens Crossover Bodywarmer

- Shaped fit
- Inner pocket and two large front pockets
- Armholes elastic trim
- Reversed quality zippers
- Prepared for embroidery

Size: S-3XL  
 Quality: 100% polyester 300T  
 with 95/5% softshell.  
 Polyester padding  
 Colli: 10/1 pcs

Colours:





## THE CROSSOVERS



### Style 9628 | Hooded Crossover Jacket

- Inner pocket and two large front pockets
- Outside chest pocket
- Quality zippers
- Elastic cuffs
- Prepared for embroidery

Size: S-3XL  
Quality: 100% polyester 300T  
with 95/5% softshell.  
Polyester padding  
Colli: 10/1 pcs

#### Colours:



Black/  
Black



### Style 9629 | Womens Hooded Crossover Jacket

- Inner pocket and two large front pockets
- Outside chest pocket
- Quality zippers
- Elastic cuffs
- Prepared for embroidery

Size: S-3XL  
Quality: 100% polyester 300T  
with 95/5% softshell.  
Polyester padding  
Colli: 10/1 pcs

#### Colours:



Black/  
Black



## BUSINESS JACKETS

news  
20/21



### Style 9606 | All Weather Jacket

- High collar
- Inner pocket and chest pocket
- Spacious front pockets with warm lining
- Waterproof with taped seams
- Elastic detail at hem and cuff
- Prepared for embroidery

Size: XS-3XL  
Quality: 88% polyester  
-12% spandex - 2 layer fabric  
with 310T polyester lining  
and DuPont™ padding  
Colli: 10/1 pcs

Colours:



Black Navy



news  
20/21



### Style 9608 | All Weather Parka

- High collar
- Inner pocket
- Large front pockets with warm lining
- Waterproof with taped seams
- Two-way zipper and magnetic button closure
- Prepared for embroidery

Size: S-3XL  
Quality: 88% polyester  
-12% spandex - 2 layer fabric  
with 310T polyester lining  
and DuPont™ padding  
Colli: 10/1 pcs

Colours:



Black



news  
20/21



### Style 9609 | Womens All Weather Parka

- Hood
- Inner pocket
- Front pockets with warm lining
- Waterproof with taped seams
- Two-way zipper and magnetic button closure
- Prepared for embroidery

Size: S-3XL  
Quality: 88% polyester  
-12% spandex - 2 layer fabric  
with 310T polyester lining  
and DuPont™ padding  
Colli: 10/1 pcs

Colours:



Black



## URBAN FAVORITES

news  
20/21



### Style 9670 | Urban City Jacket

- Pockets with flap and metal snap buttons
- Inside detachable collar
- Inside pocket
- Shaped sleeves with adjustable cuff width
- Prepared for embroidery

Size: S-3XL  
Quality: 100% polyester twill  
with 310T polyester lining  
and DuPont™ padding  
Colli: 10/1 pcs

Colours:



Black



news  
20/21



### Style 9604 | Urban Adventure Jacket

- Chin protection
- Two front pockets with double opening
- Elastic hem and cuff
- Inner pocket with snap button
- Detachable hood
- Prepared for embroidery

Size: S-3XL  
Quality: 88% polyester  
-12% spandex - 2 layer fabric  
with 310T polyester lining  
and DuPont™ padding  
Colli: 10/1 pcs

Colours:



Black Space Grey Dark Olive



NEWS  
20/21



Style 9605 | Womens Urban Adventure Jacket

- Chin protection
- Two front pockets with double opening
- Elastic hem and cuff
- Inner pocket with snap button
- Detachable hood
- Prepared for embroidery

Size: S-3XL  
 Quality: 88% polyester  
 -12% spandex - 2 layer fabric  
 with 310T polyester lining  
 and DuPont™ padding  
 Colli: 10/1 pcs

Colours:



Black Space Grey Dark Olive



Style 9600 | Newport Jacket

- Shaped fit
- Inner pocket and two large front pockets
- Outside chest pocket
- Elastic hem and cuffs
- Quality metal zippers
- Prepared for embroidery

Size: S-3XL  
 Quality: 100% polyester 300T  
 with DuPont™ padding  
 Colli: 10/1 pcs

Colours:



Black Deep Navy



Style 9601 | Womens Newport Jacket

- Shaped fit
- Inner pocket and two large front pockets
- Outside chest pocket
- Elastic hem and cuffs
- Quality metal zippers
- Prepared for embroidery

Size: S-3XL  
 Quality: 100% polyester 300T  
 with DuPont™ padding  
 Colli: 10/1 pcs

Colours:



Black Deep Navy



Style 9660 | Richmond Jacket

- Tailored classic fit
- Inner pocket and two large front pockets
- Brass quality metal zippers and buttons
- Prepared for embroidery

Size: S-4XL  
 Quality: 100% 310T nylon  
 - 100% polyester padding  
 Colli: 10/1 pcs

Colours:



Deep Navy



Style 9661 | Womens Richmond Jacket

- Tailored classic fit
- Inner pocket and two large front pockets
- Brass quality metal zippers and buttons
- Prepared for embroidery

Size: S-3XL  
 Quality: 100% 310T nylon  
 - 100% polyester padding  
 Colli: 10/1 pcs

Colours:



Deep Navy



## URBAN FAVORITES

news  
20/21

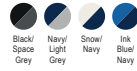


### Style 9650 | Competition Jacket

- Chin protection
- Two front zip pockets
- Inner zip pocket
- Elastic detail at hem and cuff
- Prepared for embroidery

Size: S-3XL  
Quality: 88% polyester  
-12% spandex - 2 layer fabric  
with 310T polyester lining  
and DuPont™ padding  
Colli: 10/1 pcs

Colours:



news  
20/21

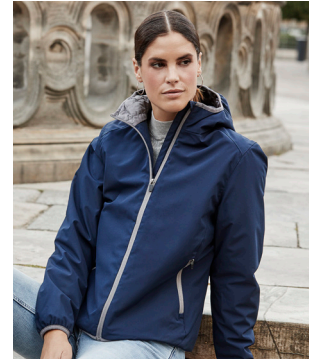
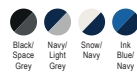


### Style 9651 | Womens Competition Jacket

- Chin protection
- Two front zip pockets
- Inner zip pocket
- Elastic detail at hem and cuff
- Prepared for embroidery

Size: S-3XL  
Quality: 88% polyester  
-12% spandex - 2 layer fabric  
with 310T polyester lining  
and DuPont™ padding  
Colli: 10/1 pcs

Colours:



## THE ZEPELIN



### Style 9630 | Zepelin Jacket

- Inner pocket and two large front pockets
- Quality zippers
- Elastic cuffs
- Fashion fit
- Prepared for embroidery

Size: S-3XL \*4-5XL  
Quality: 100% polyester 300T  
with 100% polyester padding and lining  
Colli: 10/1 pcs

Colours:



### Style 9631 | Womens Zepelin Jacket

- Inner pocket and two large front pockets
- Quality zippers
- Elastic cuffs
- Fashion fit
- Prepared for embroidery

Size: S-3XL  
Quality: 100% polyester 300T  
with 100% polyester padding and lining  
Colli: 10/1 pcs

Colours:



### Style 9634 | Hooded Zepelin Jacket

- Inner pocket and two large front pockets
- Quality zippers
- Relaxed shaped fit
- Prepared for embroidery

Size: S-3XL  
Quality: 100% polyester 300T with  
100% polyester padding and lining  
Colli: 10/1 pcs

Colours:



# THE ZEPELIN



## Style 9632 | Zepelin Bodywarmer

- Inner pocket and two front pockets
- Quality zippers
- Shaped fit
- Prepared for embroidery

Size: S-3XL  
Quality: 100% polyester 300T  
with 100% polyester padding and lining  
Colli: 10/1 pcs

### Colours:



Black Deep Navy



## Style 9633 | Womens Zepelin Bodywarmer

- Inner pocket and two front pockets
- Quality zippers
- Shaped fit
- Prepared for embroidery

Size: S-3XL  
Quality: 100% polyester 300T  
with 100% polyester padding and lining  
Colli: 10/1 pcs

### Colours:



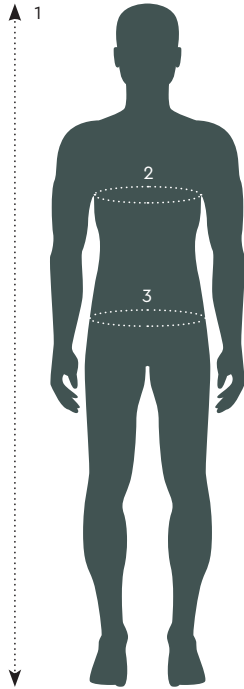
Black Deep Navy





# how to measure guide

MEN AND WOMEN



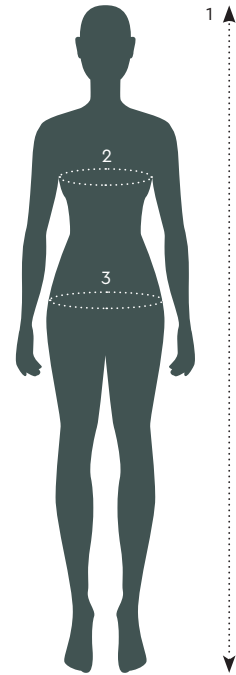
## MEASURE YOURSELF

All measurements are taken directly on the body.

**1. Height**  
Measure from top of the head to bottom of your feet.

**2. Chest**  
Measure around the widest place of your chest.

**3. Hip**  
Measure around the widest place of your hips.



Men	XS	S	M	L	XL	2XL	3XL	4XL	5XL
Height		173	178	183	188	193	194	195	196
Chest		94	100	106	112	118	124	130	136
Hip		95	101	107	113	119	125	131	137

Women	XS	S	M	L	XL	2XL	3XL	4XL	5XL
Height	159	165	171	175	179	183	183	183	183
Chest	80	86	92	98	104	110	116	122	128
Hip	88	94	100	106	112	118	124	130	136

This chart is for reference only. Fit may vary depending on the construction, materials and type of style.

TIP: If your body measurements for chest, waist and height result in different suggested sizes, decide from the size of your chest measurement. If your body measurements is between two sizes, choose the lower size for a tighter fit and the higher size for a more loose fit.

If more fitting advice is needed, feel free to contact your Tee Jays dealer, and their dedicated staff will help you.



**Tee Jays**



[www.teejays.com](http://www.teejays.com)